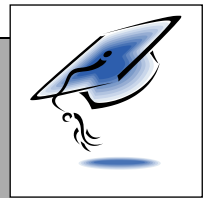


## 4<sup>th</sup> Year GCSE (SC) Religious Studies March 2021 Assessment



<b>Monday</b> 15 March	<b>9.00 – 10.00</b>	4-7 = S1 4-6 = S2 4-5 = Lecture Room	4-4 = H8 4-3 = L8 4-2 = L9 4-1 = L10
	<i>If you qualify for particular examination arrangements, a separate timetable will be given to you</i>		

- Please ensure you follow current COVID-19 safety precautions throughout the assessment
- All revision materials, mobile phones and internet enabled devices must be away from your desk throughout the assessment
- Please wait outside the room showing on this timetable 10mins before the start of the assessment
- Write your name and teacher name clearly on every page you hand in to be marked
- Write only with a black pen and ensure your writing is legible – work that cannot be read cannot be marked
- You must stay seated until the end of the assessment and the invigilator has said you can leave
- After the assessment, please go to your normal Period 2 lesson
- *If you have any questions or concerns about your assessments, please contact the Examinations Office*  
[examoff@kes.hants.sch.uk](mailto:examoff@kes.hants.sch.uk)